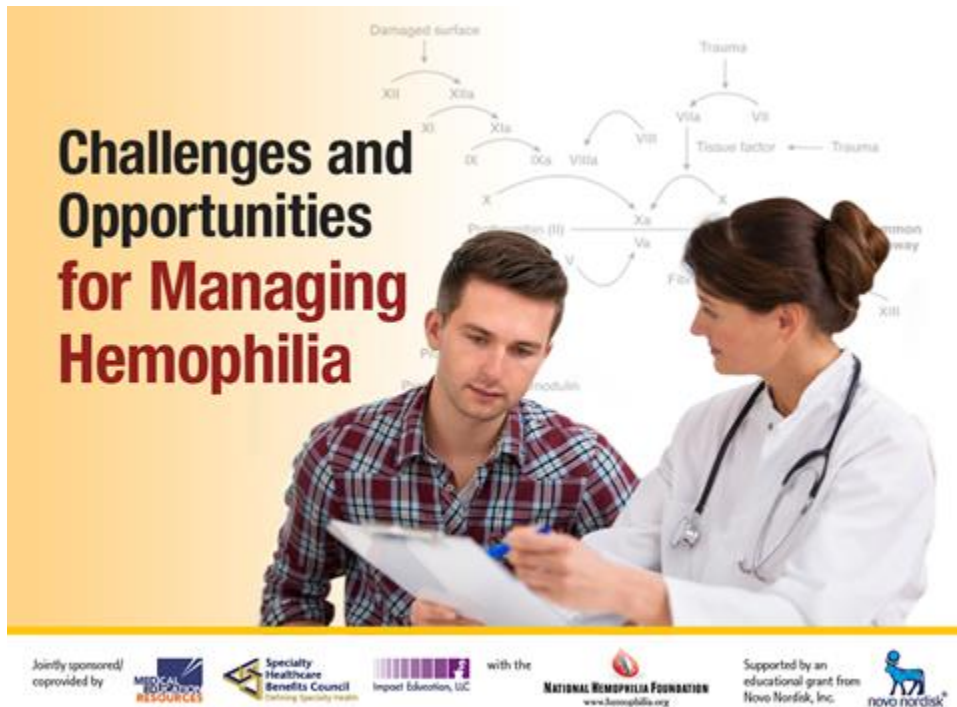


Challenges and Opportunities for Managing Hemophilia

2014

Introduction



Slide 1: Challenges and Opportunities for Managing Hemophilia

Welcome to the 2014 series Challenges and Opportunities for Managing Hemophilia.

This series is jointly sponsored by Medical Education Resources, the Specialty Healthcare Benefits Council, and Impact Education, LLC, in collaboration with the National Hemophilia Foundation.

Finally, this activity is supported by an educational grant from Novo Nordisk, Inc. and we would like to thank them for their support.

Continuing Education Information



Physician Credit

These activities have been planned and implemented in accordance with the accreditation requirements and policies of the Accreditation Council for Continuing Medical Education through the joint providership of Medical Education Resources (MER), Specialty Healthcare Benefits Council, and Impact Education, LLC. MER is accredited by the ACCME to provide continuing medical education for physicians.

Credit Designation

Medical Education Resources designates each of these live activities for a maximum of 1.0 AMA PRA Category 1 Credit(s)[™]. Physicians should claim only the credit commensurate with the extent of their participation in the activity.



Pharmacy Credit

Medical Education Resources (MER) is accredited by the Accreditation Council for Pharmacy Education as a provider of continuing pharmacy education. MER designates each of these continuing education activities for 1.0 contact hours (0.10 CEUs) of the Accreditation Council for Pharmacy Education.

Universal Activity Numbers:

Track 1: 0816-9999-14-076-H01-P

Track 2: 0816-9999-14-079-H01-P

Track 3: 0816-9999-14-080-H01-P

This activity is certified as Knowledge-based CPE.

Nursing Credit

Medical Education Resources is accredited as a provider of continuing nursing education by the American Nurses Credentialing Center's Commission on Accreditation.

Each of these CE activities provide 1.0 contact hours of continuing nursing education.

Medical Education Resources is a provider of continuing nursing education by the California Board of Registered Nursing, Provider #CEP 12299, for 1.0 contact hours per activity.

Case Manager Credit

These programs have been pre-approved by The Commission for Case Manager Certification to provide continuing education credit to CCM® board certified case managers. These courses are approved for 1.0 CE contact hours each.

Track 1: Activity code: H00011098 Approval Number: 140001115

Track 2: Activity code: H00011099 Approval Number: 140001116

Track 3: Activity code: H00011100 Approval Number: 140001117

Slide 2: Continuing Education Information

Continuing education for this activity is provided by Medical Education Resources, or MER.

They have designated this activity for one credit hour for each track, or a potential total of three hours if all three tracks are completed. This credit is for physicians, pharmacists, nurses, and case managers.

How to Get CEUs



To earn continuing educational units for this activity, please visit The Specialty Healthcare Benefits Council website at

www.SHBC.us.

There you can complete the post-test(s) and evaluation(s) and receive 1.0 continuing education credit hours per track for a potential of 3.0 credit hours total.

Slide 3: How to Get CEUs

To earn continuing educational units for this activity, please visit The Specialty Healthcare Benefits Council website at www.SHBC.us. There you can complete the post-test and evaluation and receive one continuing education credit hours per track for a potential of 3.0 credit hours total.

Track 1: Clinical Overview



- Differentiate general hemophilia from hemophilia with inhibitors, including the unique challenges associated with inhibitors.
- Discuss the impact of changes in the treatment of pediatric and adult hemophilia.

Program Name	Faculty	
Current Practices and Approaches to Care: An Update	Craig Kessler	MD
	Amy Shapiro	MD
Clinical Strategies for Managed Care and Other Payers to Improve Hemophilia Patient Outcomes	Celynda Tadlock	PharmD, MBA
Track 1 Case Study Challenges and Opportunities	Craig Kessler	MD
	Amy Shapiro	MD
	Celynda Tadlock	PharmD, MBA

Slide 4: Track 1: *Clinical Overview*

Track 1 of this series is titled Clinical Overview and includes three presentations. Upon completion of Track 1, the learner will be able to:

- Differentiate general hemophilia from hemophilia with inhibitors, including the unique challenges associated with inhibitors.
- Discuss the impact of changes in the treatment of pediatric and adult hemophilia.

Track 2: Care Management Strategies



- Improve integration of available resources, such as Hemophilia Treatment Centers (HTCs), in clinical treatment and overall patient management.
- Identify opportunities to engage key clinical and financial stakeholders in the medical care and management of pediatric and adult hemophilia patients to increase the effectiveness of all participants in the care process.

Program Name	Faculty	
Collaborative Strategies to Improve Care Management	Sue Geraghty	RN, MBA
	Karen Wulff	RN
Coordinating Care with Specialty Pharmacy Providers and Home Infusion Services	Bill Ax	
	Terry Whiteside	RPh
Care Management Strategies for Managed Care and Other Payers	James Jorgensen	RPh, MS, FASHP
Track 2 Case Study Challenges and Opportunities	James Jorgensen	RPh, MS, FASHP
	Terry Whiteside	RPh
	Karen Wulff	RN

Slide 5: Track 2: *Care Management Strategies*

Track 2 of this series is titled Care Management Strategies and includes four presentations. Upon completion of Track 2, the learner will be able to:

- Improve integration of available resources, such as Hemophilia Treatment Centers, or HTCs, in clinical treatment and overall patient management.
- Identify opportunities to engage key clinical and financial stakeholders in the medical care and management of pediatric and adult hemophilia patients to increase the effectiveness of all participants in the care process.

Track 3: Access, Coverage, and Care Issues



- Evaluate the impact of changes in the treatment of pediatric and adult hemophilia within participants' own organizations
- Evaluate current formulary development and management techniques including specialty pharmacy arrangements
- Incorporate new concepts to improve the quality and cost effectiveness of care for both pediatric and adult hemophilia patients

Program Name	Faculty	
Access, Coverage and Care Strategies for Managed Care and Other Payers	Edmund Pezalla	MD, MPH
Track 3 Case Study Challenges and Opportunities	Joan Couden	BSN, RN
	Edmund Pezalla	MD, MPH
	Steven W. Pipe	MD
	Karen Wulff	RN

Slide 6: Track 3: Access, Coverage, and Care Issues

Track 3 of this series is titled Access, Coverage, and Care Issues and includes two presentations.

Upon completion of Track 3, the learner will be able to:

- Evaluate the impact of changes in the treatment of pediatric and adult hemophilia within participants' own organizations
- Evaluate current formulary development and management techniques including specialty pharmacy arrangements
- Incorporate new concepts to improve the quality and cost effectiveness of care for both pediatric and adult hemophilia patients

Challenges and Opportunities for Managing Hemophilia

Jointly sponsored/ coprovided by   with the   Supported by an educational grant from  Novo Nordisk, Inc.

Slide 7: Challenges and Opportunities for Managing Hemophilia

We hope you enjoy this program.